

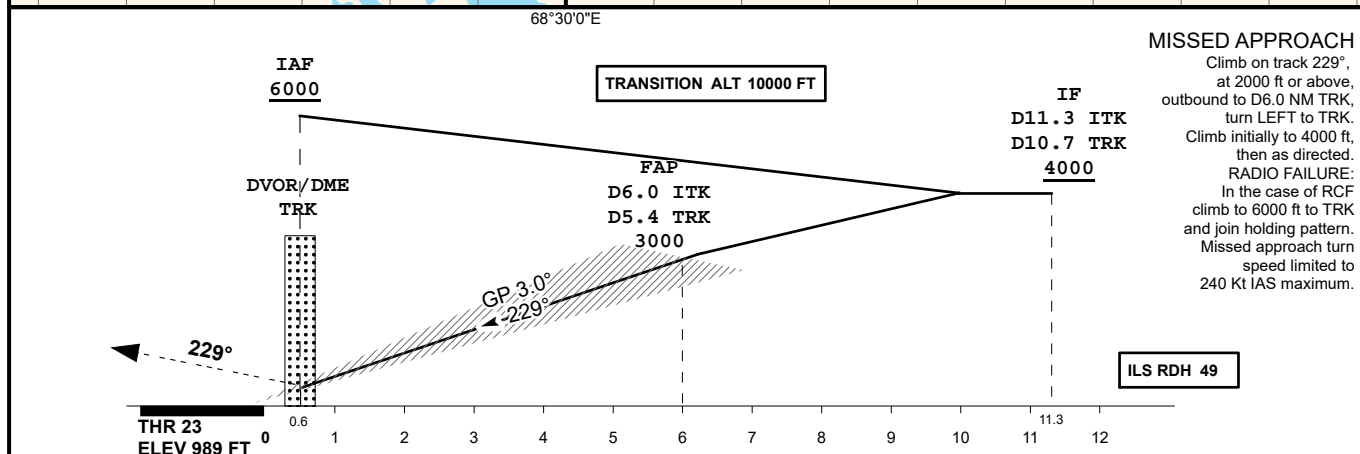
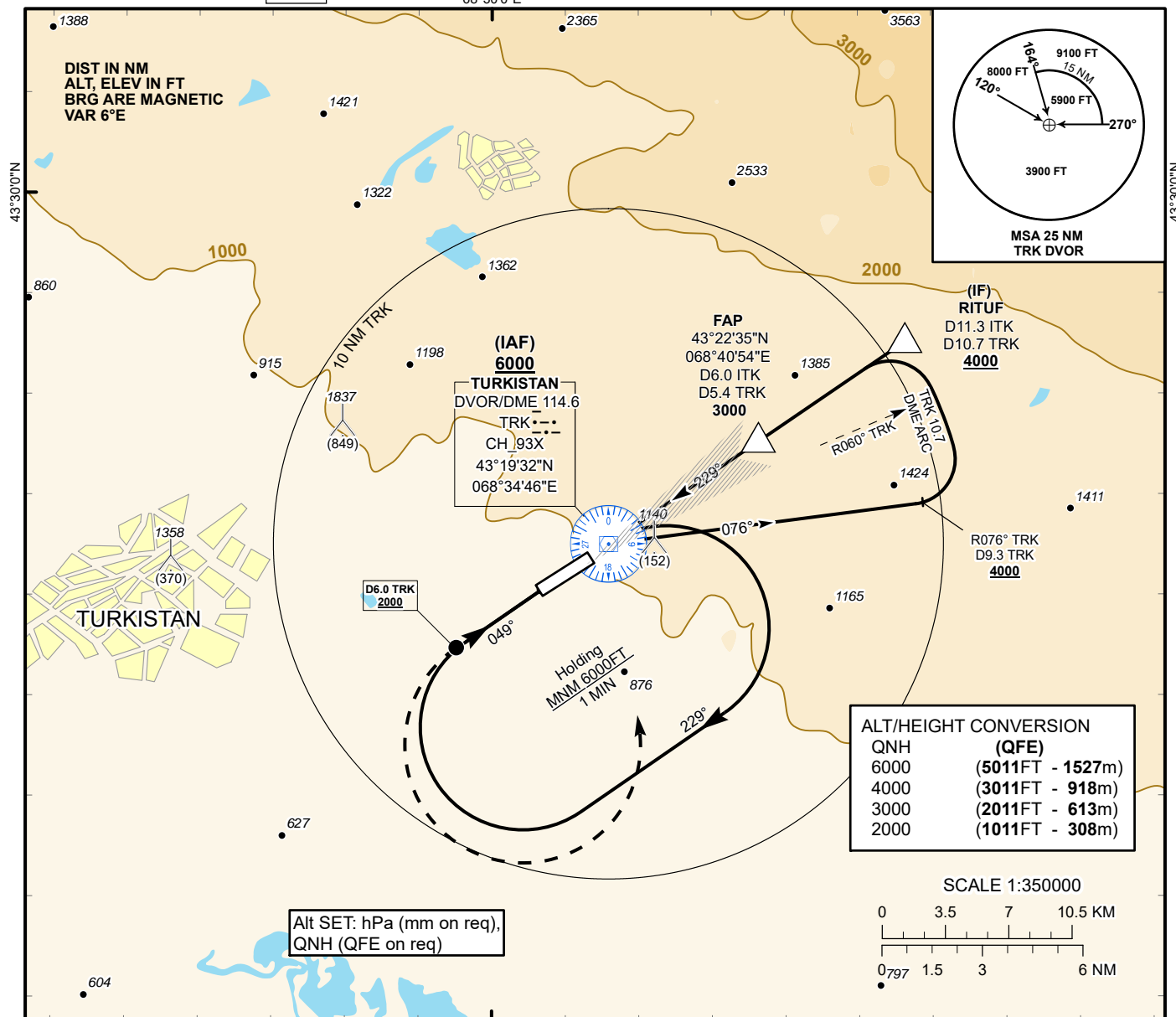
INSTRUMENT
APPROACH
CHART - ICAO

ILS
LLZ 111.3
ITK
GP 332.3
CH 50X

AERODROME ELEV **989 FT**
HEIGHTS RELATED TO
THR RWY 23 ELEV **989 FT**

TURKISTAN TOWER 131.3
TURKISTAN ATIS (EN) 124.4
TURKISTAN ATIS (RU) 118.3

TURKISTAN
ILS/DME Z
RWY 23



Aircraft Category		A	B	C	D	DIST to THR DME ITK	NM	6.0	5.0	4.0	3.0	2.0	1.0
Straight-in Approach OCA/H	CAT I	1189(200)	1189(200)	1189(200)	1194(205)	DME TRK	NM	5.4	4.4	3.4	2.4	1.4	0.4
						ALTITUDE	FT	3000	2652	2325	2001	1678	1357
						HEIGHT	FT	2011	1663	1336	1012	689	368

DME ITK ZERO RANGED TO THR RWY 23

Aerodrome Operating Minima DH ft x RVR(CMV)													
	GS	Kt	80	100	120	140	160	180					
	Desc.Rate(5.2%)	ft/min	420	530	640	740	840	950					

CHANGE: Edit.

TURKISTAN
ILS/DME Z RWY23 AERONAUTICAL DATA TABULATION

ILS approach to RWY23 from TRK DVOR/DME, RITUF	
Fix/point	Coordinates
TRK DVOR/DME	43° 19' 32.3"N 068° 34' 46.1"E
RITUF (IF) D11.3 ITK, D10.7 TRK	43° 25' 33.4"N 068° 46' 54.4"E
(FAP) D6.0 ITK, D5.4 TRK	43° 22' 35.1"N 068° 40' 54.0"E
THR RWY23	43° 19' 10.27"N 068° 34' 01.98"E
ITK LLZ	43° 18' 00.6"N 068° 31' 42.1"E